

*Complete Donor Graft Preparation System*  
*Exclusive CORONET™ Cathedral Blade Technology*  
*360° Visualisation*  
*100% Control*

# CORONET

DONOR TREPHINE PUNCH



 **NETWORK**  
MEDICAL PRODUCTS

# CORONET

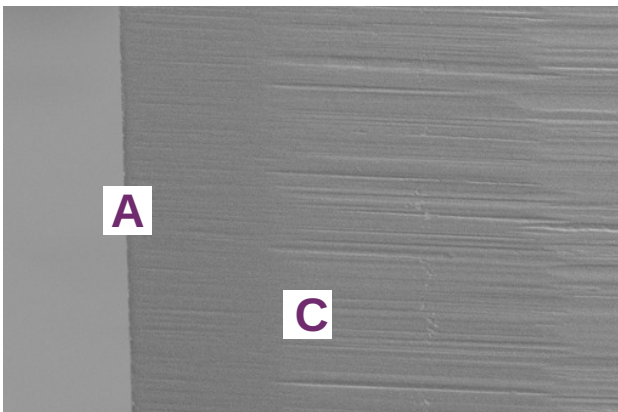
The **CORONET™** Donor Trehphine Punch has been specifically designed to deliver a reliable and consistent vertical incision, for improved wound architecture and reduced endothelia cell loss.

The free rotating trephine features **Exclusive CORONET™ Cathedral Blade Technology**, creating a perfectly round, ultra sharp and thin-walled blade which will minimise under cut and tissue distortion.

The sharpness will minimise tissue compression and the clean cutting action will reduce scarring and assist healing.

The trephine blade also includes an optically non-refractive and bio-inert finish, and being double-sided means it will not retain the graft button once cut.

## **CORONET™** Trephine Cathedral Blade Technology



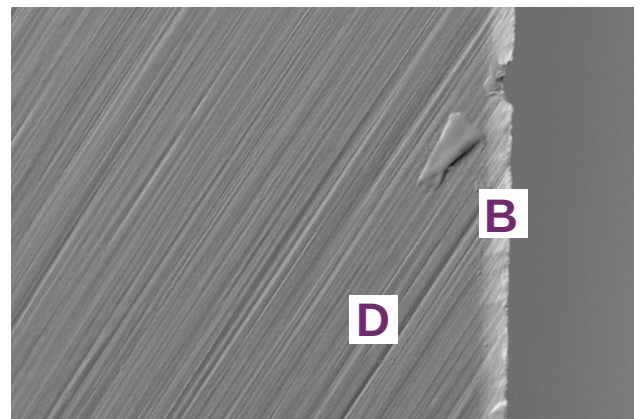
x 800 Magnification



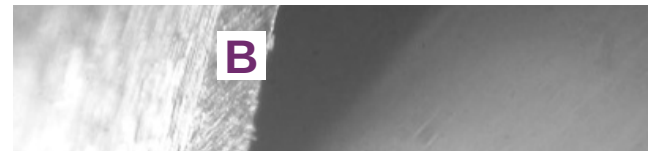
x 40 Magnification

- A** Smooth ultra-sharp 70 nanometer trephine blade edge.
- C** Double bevelled and multi-faceted 'Cathedral' structure.

## **Traditional** Trephine Standard Blade Technology



x 800 Magnification



x 40 Magnification

- B** Rough trephine blade edge with imperfect finish.
- D** Single bevelled blade edge on outside only.

## **51-850 CORONET Donor Trehphine Punch Features**

- Patent protected 360 graft visualisation windows, giving constant sight of the donor graft and allowing easy repositioning.
- The base forms a stable platform, and the anatomically shaped bowl assists tissue centralisation whilst holding the tissue in the most natural shape.
- Marker holes reduces the risk of bubble formation.
- Blade sharpness means only minimal downward pressure is required to complete the cut.
- Protective dust cover to shield graft from contamination during transfer.
- Sizes are from 6.00 mm to 9.75 mm in increments of 0.25 mm.
- Also available with vacuum system (51-835).

