

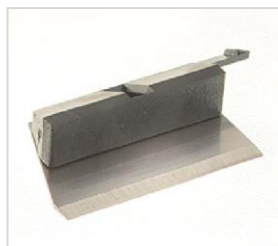
## Precision LASIK Blades Specification Sheet



ES-3030



ES-5050



ES-7070



ES-9090

### Product Overview

The Network Medical range of Precision LASIK blades have been designed to maximise the performance of the microkeratome system.

- Designed to provide a predictably thinner or thicker flap based on the surgeon's preference.
- Supplied sterile, single use only, declared shelf life 3 years
- Manufactured in the UK

### LASIK Blade Options

Compatible with	Description	Pack size	Product code
Hansatome™ microkeratome	Plus 10	10 per pack	ES-3030 +10
	Minus 10	10 per pack	ES-3030 -10
	Minus 20	10 per pack	ES-3030 -20
	Minus 30	10 per pack	ES-3030 -30
	Plano	10 per pack	ES-3030-PLANO

## Precision LASIK Blades Specification Sheet

Compatible with	Description	Pack size	Product code
Zyoptix™ XP microkeratome	Plus 10	10 per pack	ES-5050 +10
	Plus 20	10 per pack	ES-5050 +20
	Minus 10	10 per pack	ES-5050 -10
	Minus 20	10 per pack	ES-5050 -20
	Minus 30	10 per pack	ES-5050 -30
	Plano	10 per pack	ES-5050-PLANO

Compatible with	Description	Pack size	Product code
Moria™ M2 microkeratome	Plus 10	10 per pack	ES-7070 +10
	Minus 10	10 per pack	ES-7070 -10
	Minus 20	10 per pack	ES-7070 -20
	Minus 30	10 per pack	ES-7070 -30
	Plano	10 per pack	ES-7070-PLANO

Compatible with	Description	Pack size	Product code
Nidek™ microkeratome	Plus 10	10 per pack	ES-9090 +10
	Plus 20	10 per pack	ES-9090 +20
	Minus 10	10 per pack	ES-9090 -10
	Minus 20	10 per pack	ES-9090 -20
	Minus 30	10 per pack	ES-9090 -30
	Plano	10 per pack	ES-9090-PLANO

## Precision LASIK Blades Specification Sheet

### Material Specification

Product Component	Specification
Blade	Stainless Steel (440 Grade)
Holder ES-3030/ES-5050	Acetel
Holder ES-7070/ES-9090	Polyetherimide Thermoplastic
Pouch Packaging	Tyvek/Film
Outer Box/Carton Packaging	500 Micron Printed White Boxboard

### Intended Use

#### Plano Precision LASIK Blade

The Plano model is used to create a flap that approximates the average flap thickness produced by the given microkeratome head.

#### Minus Precision LASIK Blade

A minus model can be used to create a thin flap and maximise the amount of residual stroma for cases of higher correction. Patients with thicker corneas often experience thick flaps because of the cornea compression that occurs during the microkeratome pass. To adjust for the normally thicker flap on these patients, a Minus blade can be used to compensate for the thicker stroma to obtain a desired flap thickness.

#### Plus Precision LASIK Blade

The Plus model can be used when there is a need to create a thicker flap than the microkeratome head usually creates. This can be especially beneficial in cases to cut below an original flap depth to re-treat a patient,

### Instructions for Use

The instructions for use and suggested surgical technique are supplied in the form of a multi-lingual leaflet with instructions given in diagram form where appropriate. The international symbols used on the packaging are explained in each language. A leaflet is supplied with each product

### Sterilisation

Products are sterilised by Ethylene Oxide (EO) according to a validated cycle and the requirements of BS EN ISO 11135-1 (current).

## Precision LASIK Blades Specification Sheet

### Conformity to the European Directives

The Network range of Precision Lasik Blades are surgically invasive devices with respect to a Body Orifice (in this case the eyeball) and are intended for connection to an active medical device. For transient use. In accordance with Rule 6 the Precision LASIK Blades are classed as IIa.